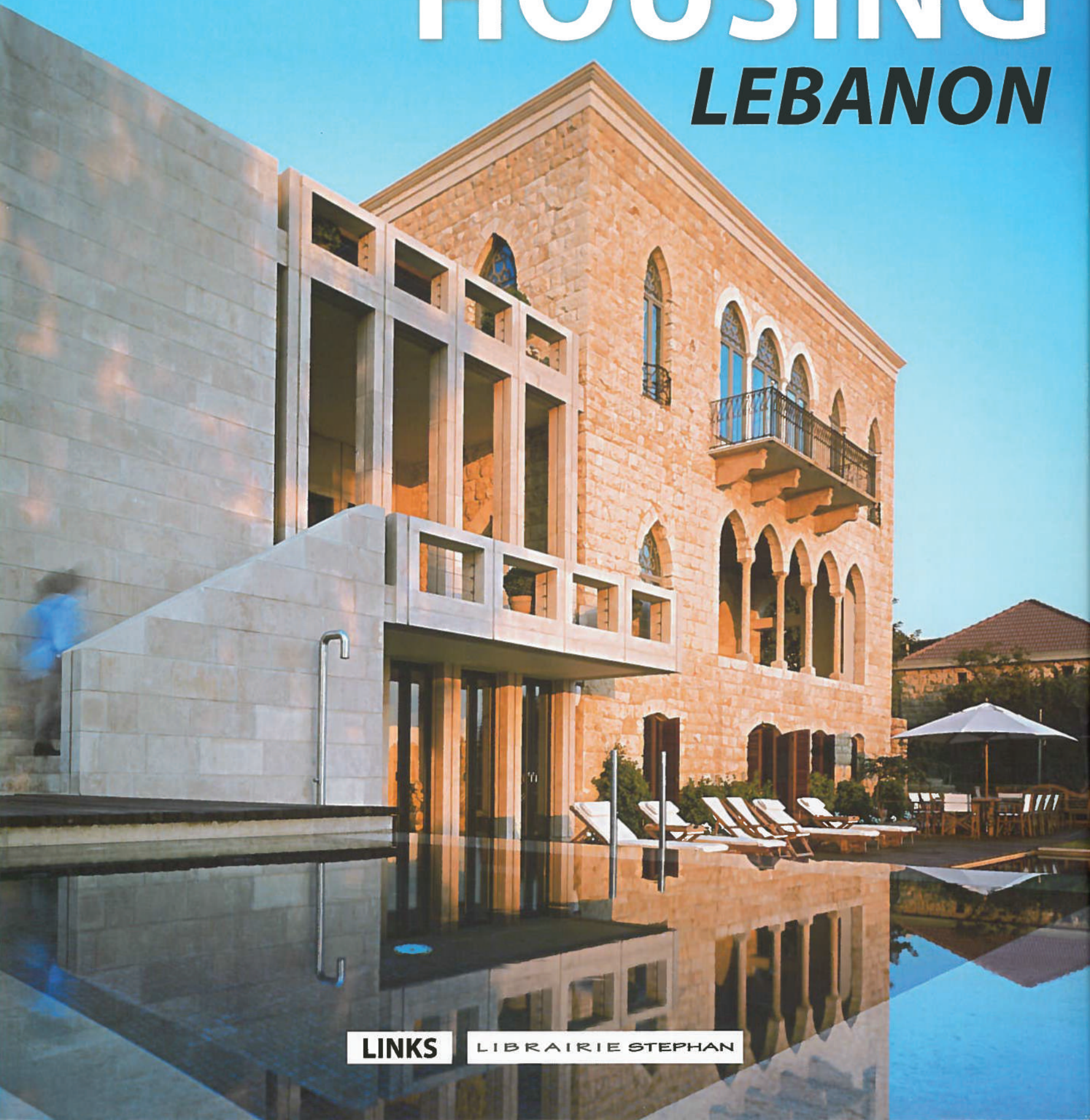


MEDITERRANEAN HOUSING *LEBANON*



LINKS

LIBRAIRIE STEPHAN

MET Architects GmbH SIA

Mackie Apartment

Beirut, Lebanon

Photographs: courtesy of MET Architects

This 480 sqm (5,200 sqft) apartment occupies the 10th floor of new residential tower in Beirut, where the client, a diamond dealer from Antwerp, wished to create a second home for himself. He had bought the flat purely for its excellent location and the view overlooking the only remaining sandy beach in the heart of the city. MET Architects were commissioned to transform the space in accordance with his wish to make it a unique, specific, and personal place. Creating individuality out of a developer's standard residential layout and overcoming the difficulty of keeping the core, interior façade, structural wall and technical shaft presented a challenge. A dramatic transformation was planned, to create a spacious reception area for social gatherings and exhibiting the client's art collection, complemented with more private spaces for the family.

The transformation began with the small elevators in the entrance lobby. The walls and floors were covered with grey Italian travertine, cut to size. An extra-large ceiling chandelier already gives some clue to the coming mood.

The entrance provides direct access to the reception area. A lower area welcomes the guests and marks a transition between the public and more private spaces. Once lit, the stretched ceiling diffuses a warm and homogeneous light. A series of ebony panels add warmth. Sliding doors open to the private family room and the bedroom corridor, where the same ebony theme is repeated. The reception area has two orientations and extends directly to an outdoor/indoor loggia. With its monochromatic white surfaces, it displays the client's personal collection of vintage furniture and art. An 18m (59 ft) custom-made counter was designed to integrate such elements as bar equipment, music systems, storage and the radiator, keeping the rest of the space clear and enhancing the 4m (13 ft) ceiling.

Impossible to avoid due to its length, the bedroom corridor was treated to enhance the shine of its surfaces and to provide visual continuation of the light ceiling. The brightness and reflection prevent it from feeling claustrophobic. Each bedroom has a distinct personality and is laid out as a suite with its own bathroom and dressing room. The bathrooms have been treated with various materials: statuario marble for the master bathroom, different types of bisazza tiles for the children's bathrooms and onyx walls and lit tiles for guests. With its mirrored ceiling and 4 m (13 ft) height, the guest bathroom is a surprising and unexpected touch.

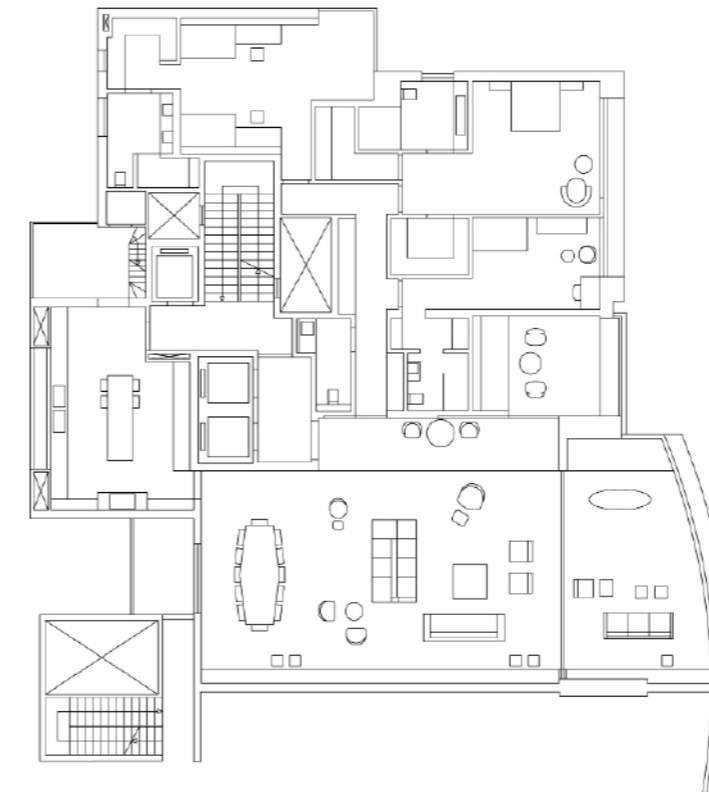
Throughout the project, very specific built-in elements were added, leading to a maximum of individuality to camouflage the insignificant existing envelope.

Design:
MET Architects GmbH SIA; Roula Moharram,
Thomas Thalhofer

Built:
480 sqm (5,200 sqft)

Completed:
2012





Floor plan

The architects were charged with bringing individuality and personality to a standard developer's apartment which had been purchased for its excellent location and view over Beirut's last sandy beach.





Each bedroom has a distinct personality and is laid out as a suite with its own bathroom and dressing room. The bathrooms all have different finishings, to provide them with individuality within the apartment.

